

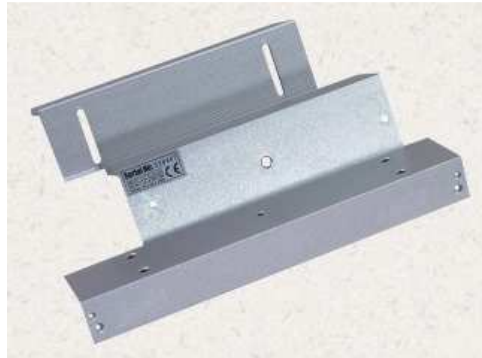


ASME

ACCESS & SECURITY MIDDLE EAST

Datasheet – Mounting Bracket – ZL Type for 600LBS

Electromagnetic Lock - MODEL: 600ZL

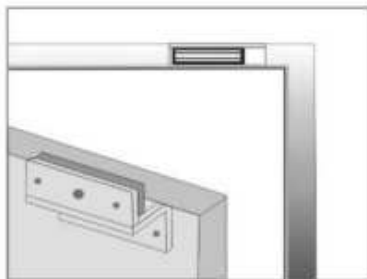


<u>Product Parameter</u>	<u>Parameter Description</u>
Dimensions:	L : 250x47x28.5(mm) Z : 180x50x50(mm)
Material:	High Strength Aluminum, Sandblast Finished
Opening Mode:	90 Degree Door
Finished for Shell:	Anodized aluminum
Door Type Applicable:	Wooden, Glass, Metal and Fireproof doors
Weight:	0.75kg

Notes:

- Product weight and dimensions are subject to change without prior notice.
- Please read the user manual before use.

Mounting Bracket Options



ZL bracket

LZ Mounting Bracket

For in-swing door, install the lock body inside and then need to install the LZ bracket at the same time.

